

## Removing Side Cover



Before you remove or install any components, make sure the system is not turned on or connected to the AC power.

1. Place the system on a flat and steady surface. Unlock the screw on the rear side, and keep the screws for later use.



2. Pull to open the cover carefully.

Right Side

Left Side



---

3. Remove it, and set it aside for later use.

Right Side



Left Side



• *Follow the above procedures in reverse order to replace the cover.*

---

# Installing Hard Disk Drive (HDD)

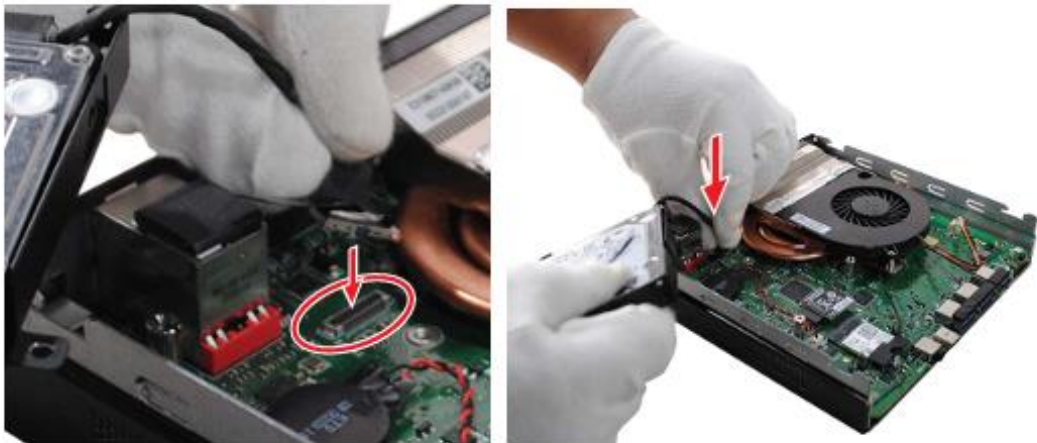
1. Remove the HDD tray by unlocking 2 screws, and keep the screws for later use.



2. Place the HDD on the HDD tray and lock the 4 screws.



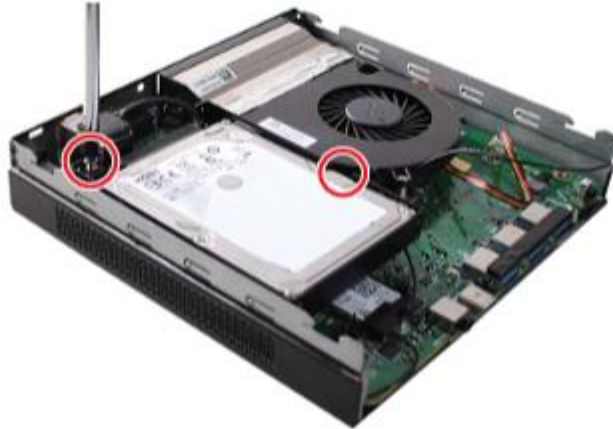
3. Connect the power cable.



- 
4. To place the HDD tray back, align the notch on the back side of the HDD tray with the pin on the motherboard.



- 
5. Lock the 2 screws.



- *Follow the above procedures in reverse order to replace the HDD if needed.*
-